



# Discussion Session

---

**Jeffrey Walker**

Department of Civil Engineering

+ many others

# Comments from Tom (Aquarius)

---

**In-situ network**

**Alternative algorithm**

**Calibration of Aquarius – PLMR/PLIS**

**Validation of Aquarius soil moisture (& LST) with a field campaign**

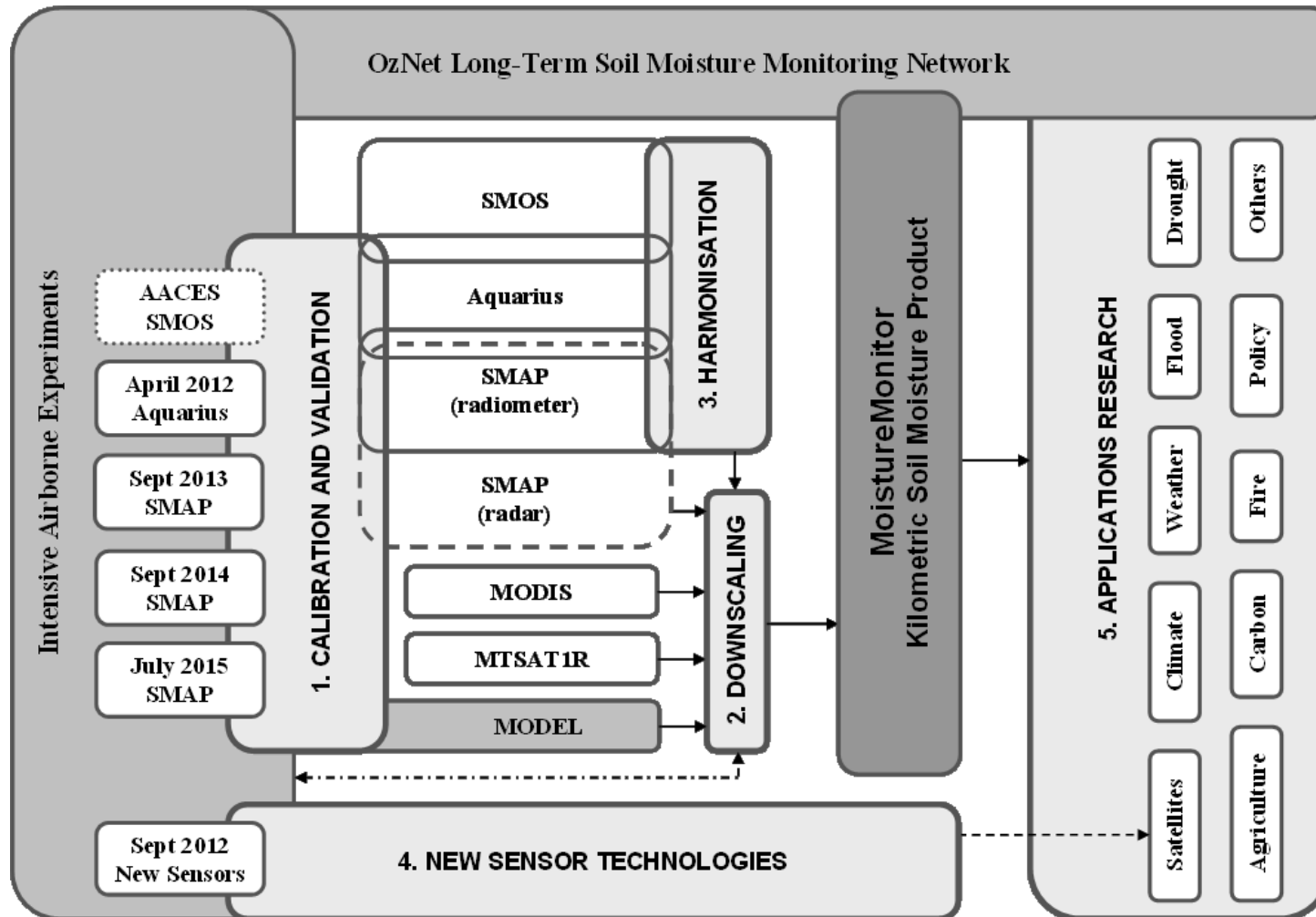
**Aquarius Launch**

- If not June, then not before Sept

**Campaign Timing**

- Crops should be in April/May -> check for lead time to confirm campaign dates

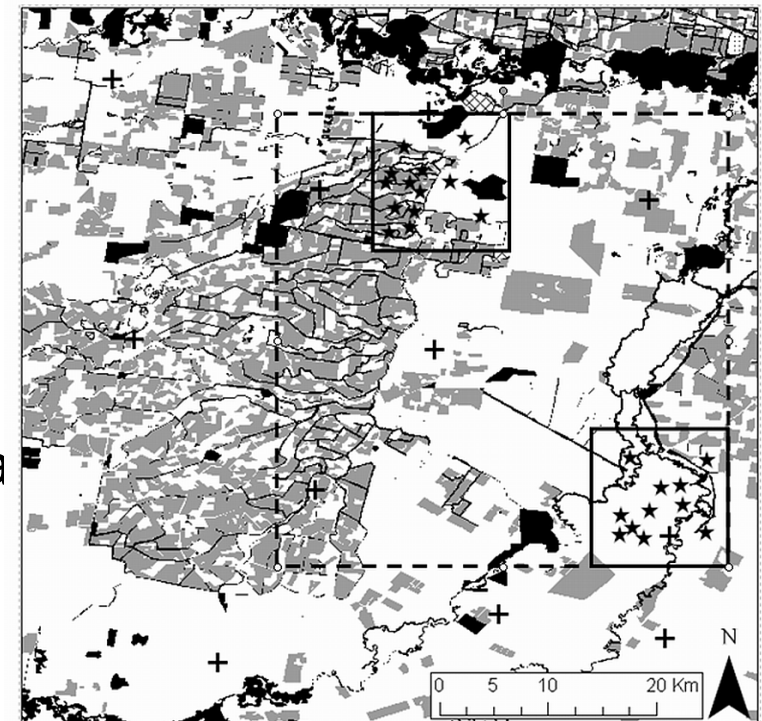
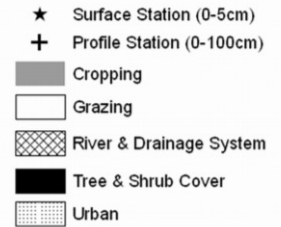
# Proposal: 2011-2016, \$4.2M



# SMAPex-3

- Likely to be 3-weeks in Sept (TBC)
- Need to develop an experiment plan supplement outlining **ADDITIONAL** data requirements:

- PALSAR
- lidar flights
- hyperspectral flights
- ground roughness data
- ground-based hyperspectral data
- vegetation structural parameters, biomass etc (forest, crops and grass ...)
- additional soil moisture?
- etc



# Baseline

## Total 9 flights approx 4hrs each

- Regional flight plan only + cal
- Mon/Wed/Fri

## Ground crew considerations

- Longer campaign implications are mostly in terms of
  - Staff salaries in the field (mostly already covered)
  - Vehicle rental (offset partially by SuperSci vehicle)
  - Food and accommodation (big expense)
    - Offset by fewer people/more fully funded volunteers
    - We do have an extra two “funded” participants
    - Do veg sampling on alternate days only
    - But we also plan on some more extensive veg sampling ...